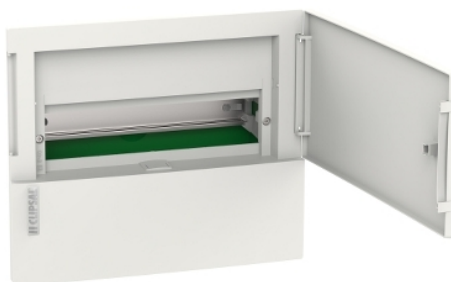


## Product data sheet

### Characteristics

# RMXE112F

Clipsal Resi MAX, Consumer switchboard 1 row 12 modules Flush Mounted



### Main

Range	Resi MAX
Product brand	Clipsal
Product or component type	Enclosure
Enclosure type	Mini enclosure for modular device
Device application	Distribution
Number of 18 mm modules per row	12
Provided equipment	DIN rail Earth terminal block Neutral terminal block
Type of front cover	Plain
Colour	White (RAL 9003)
Door type	Plain door

### Complementary

Enclosure mounting	Flush
Number of horizontal rows	1
[In] rated current	63 A
Number of ways	12 ways
Cable entry	Knock-out top and bottom Knock-out rear
Type of rail	35 mm asymmetrical rail
Number of terminal blocks	12 earth (screw connection) 14 neutral (screw connection)
Enclosure material	Technoplastic
Width	270 Mm external 294 mm (with door)
Height	228 Mm external 252 mm (with door)
Depth	80 Mm external 98 mm (with door)

### Environment

Fire resistance	Door: 650 °C Back box: 850 °C
IP degree of protection	IP40
IK degree of protection	IK07

### Packing Units

Unit Type of Package 1	PCE
Number of Units in Package 1	1
Package 1 Height	10.5 cm
Package 1 Width	27.0 cm
Package 1 Length	31.0 cm
Package 1 Weight	0.94 kg
Unit Type of Package 2	P12

Number of Units in Package 2	84
Package 2 Height	80.0 cm
Package 2 Width	80.0 cm
Package 2 Length	120.0 cm
Package 2 Weight	90.96 kg

## Offer Sustainability

EU RoHS Directive	Not applicable, out of EU RoHS legal scope
-------------------	--