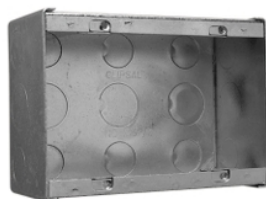


Product data sheet

Characteristics

2157/2

2000 Series, Wall Boxes Metal 2 Gang to Suit 2000/2 Series



Main

Range of product	Series 2000
Product brand	Clipsal

Complementary

Shape	Rectangular
Number of gangs	2 gangs
Cable entry number	22
Material	Steel
Surface treatment	Electro-galvanized
Length	136 mm
Width	98 mm
Depth	58 mm
Location of connection	Rear

Packing Units

Unit Type of Package 1	PCE
Number of Units in Package 1	1
Package 1 Weight	0.41 kg

Offer Sustainability

Sustainable offer status	Green Premium product
REACH Regulation	 REACH Declaration
REACH free of SVHC	Yes
EU RoHS Directive	Pro-active compliance (Product out of EU RoHS legal scope)  EU RoHS Declaration
Toxic heavy metal free	Yes
Mercury free	Yes
China RoHS Regulation	 China RoHS Declaration
RoHS exemption information	 Yes
Environmental Disclosure	 Product Environmental Profile