

# KWH METER - DIN RAIL MOUNT



## THREE PHASE - NMI APPROVED

**NMI  
APPROVED**

### FEATURES & BENEFITS

- NMI approved for billing applications
- Digital LCD display
- Polyphase - Suitable for 1, 2 and 3 phase metering
- Tamper seal kit available
- 1 year warranty
- Note - Not suitable for solar applications.

### SPECIFICATIONS

#### Materials:

- Housing - Fire resistant ABS

#### Weatherproof rating:

- IP51

#### Display:

- Backlit blue LCD

#### Accuracy class:

- Class 1

#### Insulation class:

- Class 2

#### Maximum rated current:

- 100 Amp

#### Operational current range:

- 0.25 - 100 Amp

#### Over current withstand:

- 1000 Amp for 0.1s

#### Nominal voltage:

- 230 /415Vac

#### Operating frequency:

- 50 - 60 Hz

#### Maximum cable capacity:

- 25mm<sup>2</sup> (neutral 2.5mm<sup>2</sup>)

#### Operating temperature:

- -20°C to 65°C

#### Test output flash rate:

- 1000 impulses per kWh

#### Power supply indicator:

- Mains power ON

#### Consumption indicator:

- Flashing on load

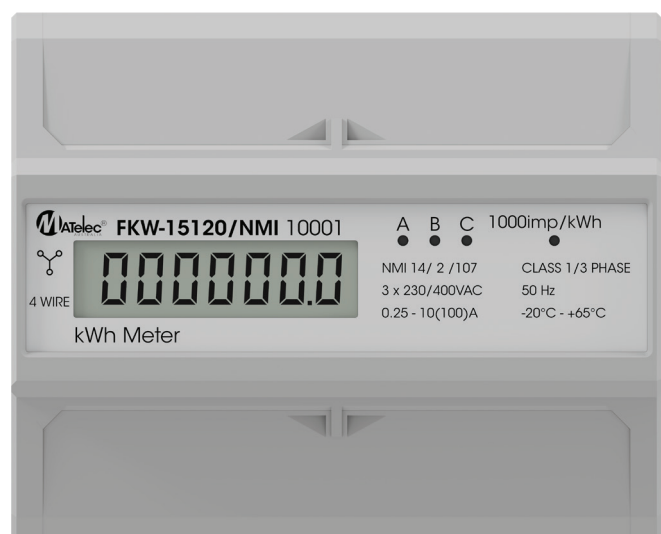
#### Conforms to:

- IEC62052-11
- IEC62053-21

#### Dimensions:

- 100mm (H) x 122mm (W)  
x 65mm (D) 7 Modules

Report/Certification Number	Date Issued
SGS Test Report Reference No. SHE5190301218301	5/5/2019
National Measurement Institute (NMI) 14/2/107	10/7/2019
IEC Test Report IEC 62053-21:2003, IEC62052-11:2003	12/12/2014



Code	Description	Packing	MOQ	Ctn
FKW-15120/NMI	KWH Meter - Din Rail Mount - Direct Electronic 0-100A - Three Phase - NMI Approved	1	1	30