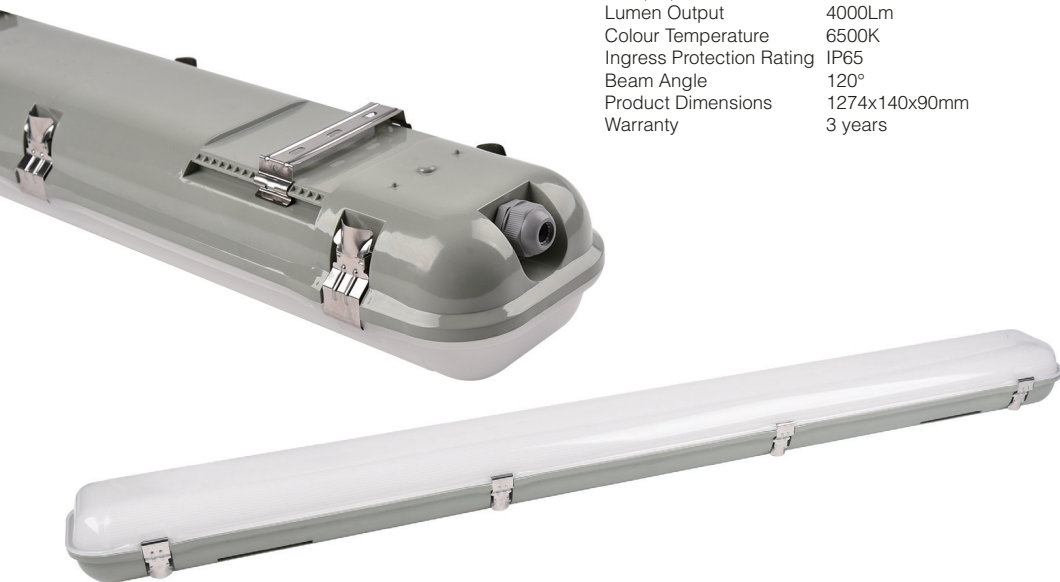


INSTRUCTION MANUAL

WEATHERPROOF BATTEN

9992030

DIRWP40LEDDL



DirectWholesale

SPECIFICATIONS

Rated Power	40W
Input Voltage	240VAC, 50Hz
Power Factor	0.9
CRI (Ra)	>80
Lumen Output	4000Lm
Colour Temperature	6500K
Ingress Protection Rating	IP65
Beam Angle	120°
Product Dimensions	1274x140x90mm
Warranty	3 years

INSTALLATION INSTRUCTIONS

1. Ensure that the power has been isolated before attempting installation
2. Ensure the desired location is suitable and clear of all obstructions
3. Measure and mount included mounting clips to the desired surface. Alternate mounting methods are possible using supplied screws and masonry anchors
4. Release clips on each side of the diffuser to open luminaire
5. Remove gear tray by twisting locking tabs
NOTE: Ensure lanyard is still connected between gear tray and luminaire body
6. Terminate the supply cable into the terminal block in an approved manner
7. Secure gear tray using twist locks
8. Replace the diffuser and secure using clips
9. Energise and test luminaire

WARNING: RISK OF ELECTRIC SHOCK

This product shall be installed by a licenced electrician in compliance with the requirements set out in AS/NZS 3000 (current edition) and other relevant Standards and Regulations pertaining to the installation.

This product must only be used for the purpose outlined in this instruction manual.

Failure to follow these instructions may result in serious injury or death.

Prior to installing this product, check whether the product has been damaged during transport. Do not operate/ install the product if damaged in any way. Return complete product to the place of purchase for inspection, repair or replacement.

WARRANTY PROCESS

- This product is guaranteed against faulty workmanship and materials for a period of three (3) years or 20,000 hours, whichever comes first, from the date of installation
- Direct Wholesale will, at its discretion, repair, replace, or offer a refund for any defective product
- This warranty is expressly subject to the Direct Wholesale product being installed, wired, tested, operated and used in accordance with our instructions and specifications
- Any alterations or modifications made to the product without our permission will void the warranty
- Direct Wholesale will not be responsible for the cost of retrieving, removing, reinstalling, transporting (including return of the defective product to us) or re-testing a product

CLAIM PROCESS

- You shall provide Direct Wholesale with adequate particulars of the defect within 28 days of the fault occurring
- Warranty claims, including all defect particulars and proof of purchase, shall be submitted to the following email address for consideration: admin@directwholesale.com.au
- Returned products must be securely packed and labelled for proper processing

Our goods come with guarantees that cannot be excluded under the Australian Consumer Law. You are entitled to a replacement or refund for a major failure and compensation for any other reasonably foreseeable loss or damage. You are also entitled to have the goods repaired or replaced if the goods fail to be of acceptable quality and the failure does not amount to a major failure.